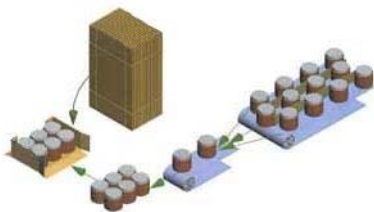
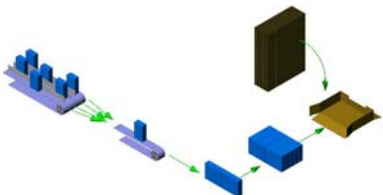
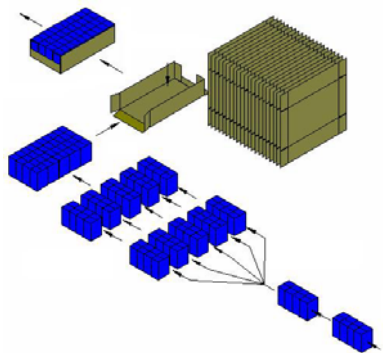


Schneider Tray Packers efficiently pack a wide range of products in diverse environments.

Some examples of possible pack patterns...



The Tray Packer offers flexibility and gentle product handling for many style containers including tubs, bottles, aseptic cartons and drink pouches, to name just a few.

Throughput of up to 30 trays per minute can be achieved depending on product and pack pattern requirements. Schneider designs each machine for optimal performance for the specific environment and product characteristics. Smooth dependable product flow and gentle collation of product occur with precise timing in conjunction with erecting and sealing of trays.



The Tray Packer accommodates many variations of tray styles including end slotted, side slotted, display and high wall styles.

Schneider uses standard principles and proven subsystems to configure a tray packer that is right for each application.

Tray Packers

The illustration at right represents a typical floor plan. Schneider configures each tray packer to meet your specific floor plan and product requirements.

Layouts for opposite-hand machines along with inline, counterflow, and perpendicular product flow can be provided to suit specific customer facility conditions.

Basic Operation

Schneider Tray Packers are operated by an intermittent motion indexing unit, Servos, air cylinders, and a vacuum system to open and form the tray blank.

Product is delivered to the tray packer infeed, collated and automatically loaded into the tray. The loaded tray cycles forward where the flaps are folded and tightly sealed. Fully loaded and sealed trays are delivered to the customer's takeaway conveyor.

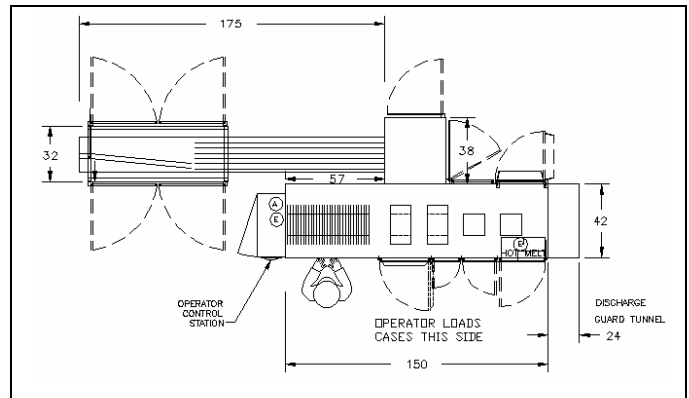
Flat, tray blanks are manually stacked in a powered magazine. The tray packer automatically selects one tray at a time, and forms it.

Machinery motions are under the continuous control of a PLC.

Schneider Packaging Equipment Co., Inc.

PO Box 890 - 5370 Guy Young Road
Brewerton, NY 13029
phone (315) 676-3035
fax (315) 676-2875

e-mail - info@schneiderequip.com
website - www.schneiderequip.com



Specifications

Tray Type:

End Slotted and Side Slotted Trays
Display Tray or High Wall Tray

Sealing:

Hot melt glue or cold glue

Main Drive:

Intermittent motion driven index

Construction:

Stainless steel or painted carbon steel

Tray Magazine:

48" standard (40" of storage capacity - board thickness determines capacity) - 2' increment extensions available up to 10'

Guarding:

Category III polycarbonate/PVC interlocked guarding

Enclosures & Electrics

NEMA 4, 4X, or 12 electrical with lockout, tagout disconnect

Power:

230/380/460 or 575 volt, 3 phase
50/60 hertz plant power
Air requirement delivered at 90 psi - 3/4 NPT

Visual Display:

Touchscreens - color or grayscale

Controller:

PLC microprocessor